



## Features

- Aluminium sliding windows and doors
- Colourbond fascia, gutter and roof
- Insulation to roof and external walls
- Heating and cooling split system
- Solar hot water system
- Stainless steel kitchen appliances
- Separate laundry
- Built-in-ropes to all bedrooms
- Clipsal smoke detector directly wired
- Television points and antenna
- Safety switch to meter box
- Roller door to car parking
- Optional decking/undercover car parking
- Clothesline
- Pantry, linen and broom cupboards
- Front landscaping/fencing

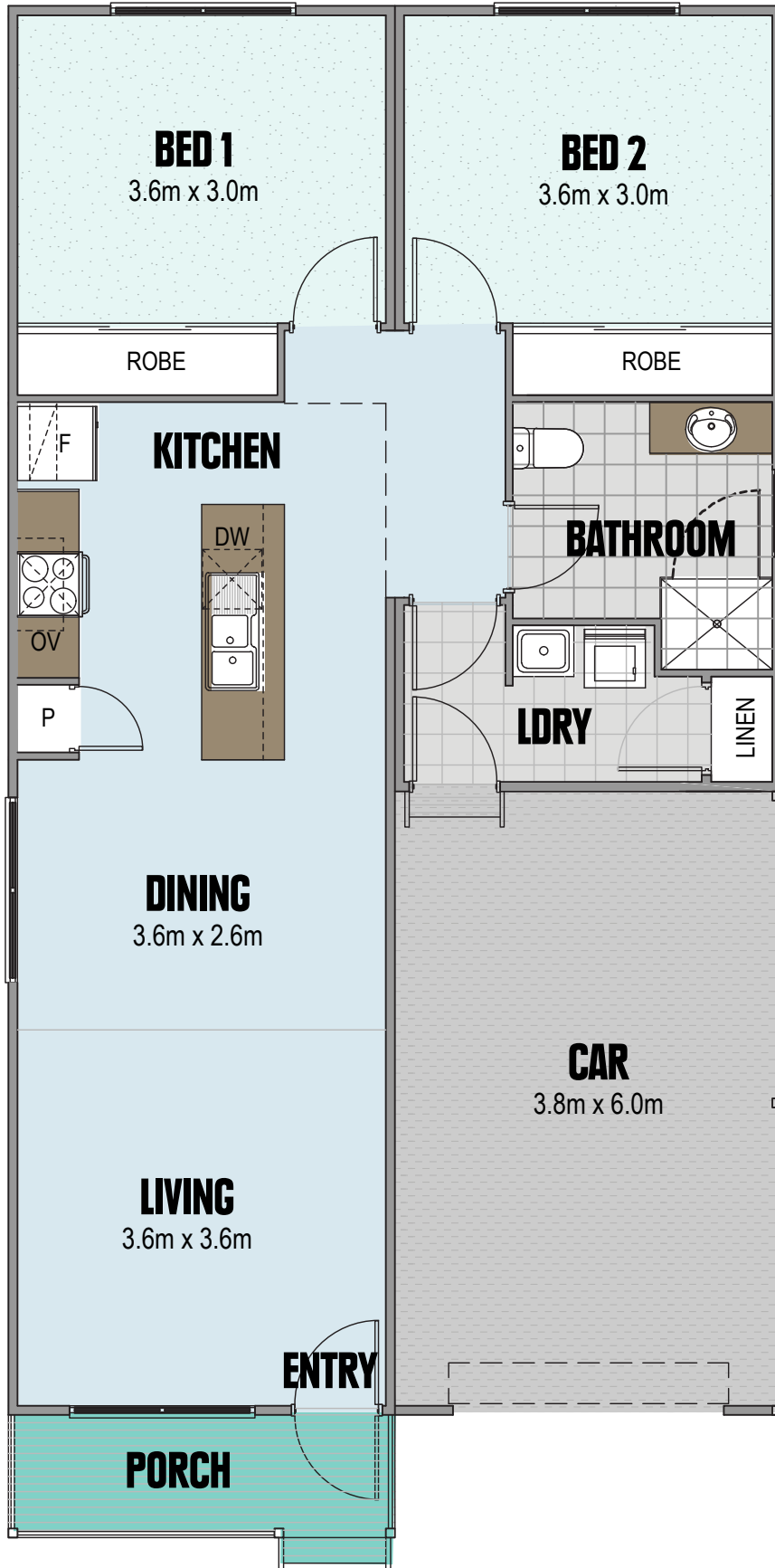


*lovin' this  
life!*

**There are more great features available. Make your home uniquely yours with our comprehensive range of inclusions, finishes and extras. Speak to us about your options.**

# WATTLE

Type 14



Please note: Plan and pictures are indicative only and subject to change without notice. September 2016  
Wall oven/microwave and dishwasher installed with Deluxe finish only. Upright cooker installed with Classic finish.

TOTAL AREA	108.55m <sup>2</sup>
------------	----------------------